



**REGIONAL SPECIALISED METEOROLOGICAL CENTRE-TROPICAL CYCLONES, NEW DELHI
TROPICAL WEATHER OUTLOOK**

DEMS-RSMC SPECIAL TROPICAL CYCLONES NEW DELHI DATED 06.12.2021

TROPICAL WEATHER OUTLOOK FOR NORTH INDIAN OCEAN (THE BAY OF BENGAL AND ARABIAN SEA) VALID FOR NEXT 120 HOURS ISSUED AT 0600 UTC OF 06.12.2021 BASED ON 0300 UTC OF 06.12.2021.

BAY OF BENGAL:

THE WELL MARKED LOW PRESSURE AREA OVER NORTHWEST BAY OF BENGAL AND ADJOINING WEST BENGAL-BANGLADESH COASTS HAS WEAKENED INTO A LOW PRESSURE AREA OVER THE SAME REGION AT 0300 UTC OF TODAY, THE 6TH DECEMBER.

SCATTERED LOW AND MEDIUM CLOUDS WITH EMBEDDED MODERATE TO INTENSE CONVECTION OVER GANGETIC WEST BENGAL ADJOINING WEST BANGLADESH (MINIMUM CLOUD TOP TEMPERATURE MINUS 57 DEG C). IN ASSOCIATION WITH THE LOW PRESSURE AREA OVER NORTHWEST BAY. SCATTERED LOW AND MEDIUM CLOUDS WITH EMBEDDED MODERATE TO INTENSE CONVECTION OVER NORTH & ADJOINING CENTRAL BAY OF BENGAL, SOUTHEAST BAY OF BENGAL AND SOUTH ANDAMAN SEA.

PROBABILITY OF CYCLOGENESIS (FORMATION OF DEPRESSION) DURING NEXT 120 HRS:

24 HOURS	24-48 HOURS	48-72 HOURS	72-96 HOURS	96-120 HOURS
NIL	NIL	NIL	NIL	NIL

ARABIAN SEA:

SCATTERED LOW AND MEDIUM CLOUDS WITH EMBEDDED ISOLATED MODERATE TO INTENSE CONVECTION OVER SOUTHEAST ARABIAN SEA & COMORIN AREA.

PROBABILITY OF CYCLOGENESIS (FORMATION OF DEPRESSION) DURING NEXT 120 HRS:

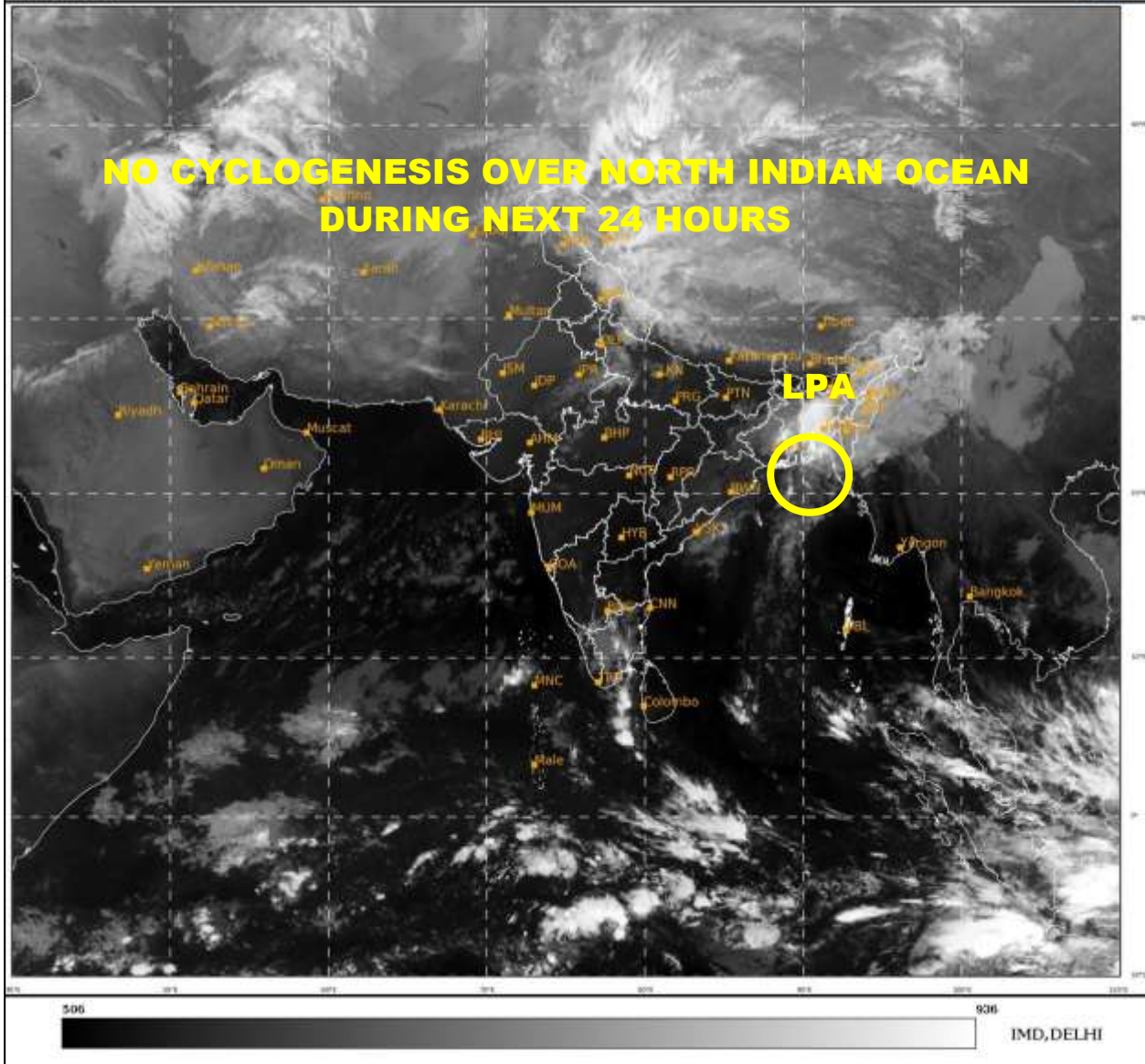
24 HOURS	24-48 HOURS	48-72 HOURS	72-96 HOURS	96-120 HOURS
NIL	NIL	NIL	NIL	NIL

REMARKS:

NIL

SAT : INSAT-3D IMG
IMG_TIR1 10.8 um
LIC Mercator

06-12-2021/(0300 to 0327) GMT
06-12-2021/(0830 to 0857) IST



LPA: LOW PRESSURE AREA